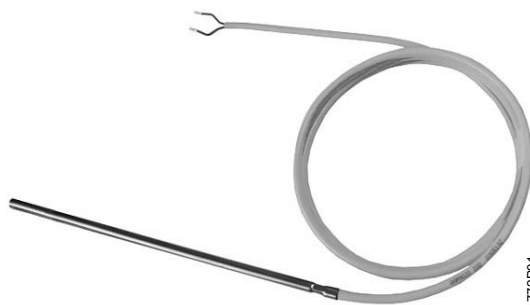




AQM9020



QAM9020...

Duct Temperature Sensors

QAM9020...

Use

The QAM9020... duct temperature sensors are designed for use in ventilation and air conditioning plants as supply or extract air temperature sensors.

Type summary

Type reference	Cable length X	Packing size
QAM9020.200	2.0 m	50 pieces
QAM9020.400	4.0 m	25 pieces
QAM9020.400A	4.0 m	25 pieces

Accessories

Name	Type reference	Packing size
Mounting flange	AQM9020	25 pieces

Ordering and delivery

When ordering, please give name and type reference, e. g. duct temperature sensor **QAM9020.200**

The AQM9020 mounting is not included in the delivery and must be ordered as a separate item.

Mechanical design

The duct temperature sensor consists of a stainless-steel sleeve which accommodates the sensing element and a ready connected cable.

The sensing element is located at the top of the sleeve and embedded in thermal conductive paste.

Disposal



This symbol or any other national label indicate that the product, its packaging, and, where applicable, any batteries may not be disposed of as domestic waste. Delete all personal data and dispose of the item(s) at separate collection and recycling facilities in accordance with local and national legislation.

For additional details, refer to [Siemens information on disposal](#).

Technical data

General sensor data	Operating range	- 35...+ 100 °C
	Sensing element	
	QAM9020.200, QAM9020.400	LG-Ni 1000 (Class B)
	QAM9020.400A	LG-Ni 1000 (Class A)
	Time constant t_{63}	approx. 1 min at an air velocity of 3 m/s
Materials	Active sensor length	50 mm
	Sleeve	stainless steel 1.4571 (V4A)
	Connecting cable	PVC
Degree of protection	Protection degree of housing	IP65 according to EN 60529
	Protection class	III to EN 60730-1
Connecting cable	Number of wires	2
	Cross-sectional area per wire	0.35 mm ²
	Length X	refer to "Type summary"
Mechanical connection	Mounting flange	AQM9020
Environmental conditions	Perm. cable temperature	- 15...+ 90 °C
	Perm. humidity	< 95 % r.h.
Weight incl. packaging	QAM9020.200	0.080 kg
	QAM9020.400	0.125 kg
	QAM9020.400A	0.125 kg
	AQM9020	0.057 kg
	EU conformity (CE)	8000073890, A5W00040799 *)
	UKCA	A5W00188754A *)
	Environmental compatibility (QAM9020.400A)	The product environmental declaration (A5W00715955A *) contains data on environmentally compatible product design and assessments (RoHS compliance, materials composition, packaging, environmental benefit, disposal).

*) The documents can be downloaded from <http://siemens.com/bt/download>.

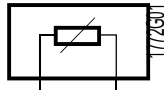
Engineering notes

The permissible cable lengths depend on the type of controller used. For details, refer to the Data Sheet of the relevant controller.

Mounting and installation notes

To mount the duct temperature sensor, it is recommended to use the AQM9020 mounting flange. To ensure correct temperature acquisition along the entire length of the sleeve, the immersion length of the QAM9020... must be a minimum of 50 mm. If the connecting cable needs to be extended, a conduit box is required.

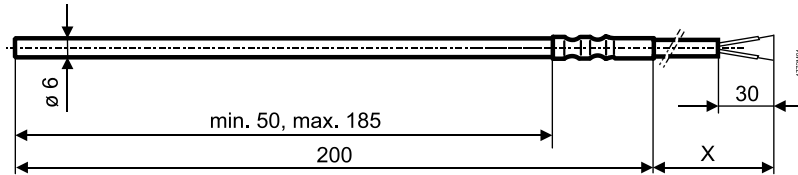
Internal diagram



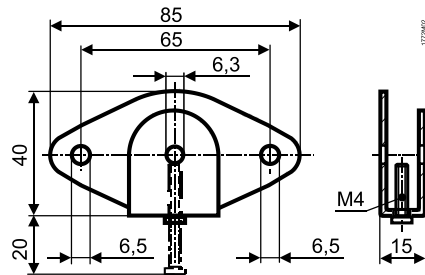
The internal diagram is identical for all types of duct temperature sensors covered by this Data Sheet.
The connecting wires are interchangeable.

Dimensions (in mm)

QAM9020...



AQM9020



Issued by
Siemens Switzerland Ltd
Smart Infrastructure
Global Headquarters
Theilerstrasse 1a
CH-6300 Zug
+41 58 724 2424
www.siemens.com/buildingtechnologies

© Siemens 2014
Technical specifications and availability subject to change without notice.